

# HDMI VIDEO TEST PATTERN GENERATOR

Generates video patterns for testing HDMI or DVI displays



**MONTEST-HDMI (Front & Back + Remote)**

## Features & Applications

The MONTEST-HDMI Video Test Pattern Generator generates video test patterns for evaluating and testing HDMI or single-link DVI displays and components. It also supports 3 types of audio test signals including a built-in sine wave tone generator, left and right channel stereo inputs, and an optical S/PDIF digital audio input.

The MONTEST-HDMI Pattern Generator can be conveniently controlled via the front panel buttons, IR remote control or an RS232 connection. These controls allow selection of timings, patterns, color spaces, DVI/HDMI output, and audio signal type.

- Generates 39 distinct test patterns and 35 resolution and timings settings.
- Supports color space RGB, YUV 4:4:4 and YUV 4:2:2.
- Provides HDCP signal verification pattern.
- Built-in sine wave tone generator for audio signal testing.
- Accepts external digital and analog audio test signals.
- Supports HDMI or DVI single-link signal.
- Front panel LCD display shows resolution and test pattern selected.
- Front panel LEDs indicate HDMI or DVI signal output, color space selection, audio output selection, random pattern cycling and HDCP mode.

## Specifications

- HDMI v1.2, HDCP 1.1 and DVI 1.0 compliant.
- Bandwidth: 1.65Gbps (Single Link)

### Resolution:

- Supports VGA(640x480), SVGA(800x600), XGA(1024x768), 1280x960, SXGA(1280x1024), UXGA(1600x1200), and WUXGA(1920x1200) resolutions.
- Supports 480i, 480p, 576i, 576p, 720p, 1080i and 1080p HDTV resolutions.

### Power:

- 100-240 VAC at 50 or 60 Hz via AC adapter

### Dimensions:

- WxDxH (in): 11x6x2
- Weight: 4.5 lbs

# HDMI VIDEO TEST PATTERN GENERATOR

Generates video patterns for testing HDMI or DVI displays

## Compatibility

- Any display with an HDMI or DVI interface.

### Connectors:

- One female HDMI Type A connector for HDMI or DVI output. For DVI displays, use an HDMI to DVI adapter.
- Dual RCA audio jacks for analog stereo audio input.
- One optical audio jack for digital audio input.

## Control Methods

- Front panel buttons.
- IR remote control.
- Via a female DB9 RS232 serial port using the included application software. Requires straight-through wired RS232 cable (not included)
  - Application software provides an on-screen GUI for controlling the pattern generator using a Windows PC. Supports Windows 98/2000/XP/Vista.

## Package Includes

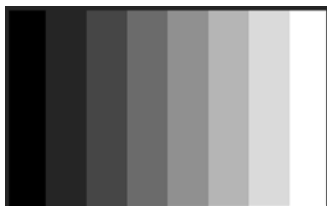
- MONTEST-HDMI Video Test Pattern Generator.
- IR remote control.
- Dual RCA audio cable, male to male, 3 ft.
- Optical S/PDIF cable, male to male, 4.5 ft.
- AC power adapter.
- International plug attachments.
- CD with software and user manual.

## Test Screens



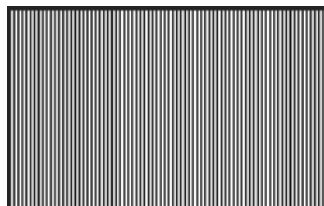
**Color Bars**

- Tests for color balance



**Grayscale**

- Locates faulty linearity of the video amplifier or gray scale settings



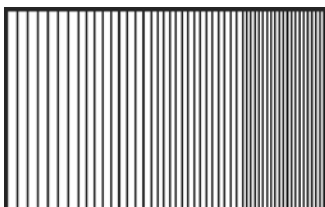
**Vertical Black and White Stripes**

- Tests for color display's horizontal bandwidth



**Horizontal Black and White Stripes**

- Tests for color display's vertical bandwidth



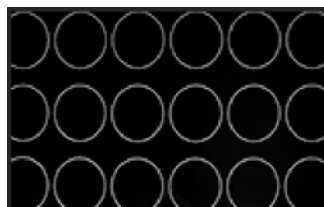
**Multi-burst**

- Tests the resolution of displays and video recorders
- Checks frequency response



**Grid**

- Checks for alignment and corner convergence of displays



**Circles**

- Checks overall linearity and geometry of a display



**HDCP Verification Pattern**

- Tests for HDCP compliance



330.562.1999  
Worldwide fax



sales@vpi.us



www.montest.com

©2007, VPI  
All rights reserved