

# Professional CCTV Tester with Power Over Ethernet (PoE) and IP Testing

Display and configure video; control PTZ; test cables, audio, IP network connections, PoE voltage; and power 12VDC cameras.



**TESTER-CCTVPOE-P**

The TESTER-CCTVPOE-P Professional CCTV Tester with Power Over Ethernet (PoE) and IP Testing is a portable, multifunction tester for CCTV installations and maintenance. Power cameras and review the display without the hassle of running between the camera and a DVR located in a separate area. Test options include: audio, video, ping, TDR, PoE, IP network connections, and LAN (local area network) cable connections.

## Features & Applications

- 3.5" TFT-LCD with 480x320 resolution and up to 10x zoom.
- Automatically adapts and displays NTSC or PAL video – generates the PAL/NTSC multi-system color bar for video testing and calibration.
- Compact, hand-held size for easy operation.
- Video level testing: video signals measured in IRE or mV.
- 12V DC, 1A power output for cameras.
- Audio input testing.
- Check IP address and Ethernet connection of the connected device.
- Record and store images and video files.
- PTZ (Pan-Tilt-Zoom) control:
  - Pan, tilt and zoom
  - Adjust focus and aperture
  - Configure and activate preset position
  - Supports more than twenty PTZ protocols.
  - Scans PTZ camera ID.
- Generates eight forms of PAL/NTSC color bar patterns.
- Test LAN or telephone cables for connection status.
- Displays wire sequence and serial number of cable tester.
- Supports RS232, RS485 and RS422.
  - Captures and displays RS485 data for troubleshooting.
  - Baud rate: 600 to 115200 bps.
- Tests the PoE voltage when a POE switch is supplying power to the IP camera.
  - Displays the power+ and power- on the ethernet cable pins, each cable pin's voltage and the failure connection of cable pin series numbers.
  - Easily locate the connected port on the PoE switch by activating device port flicker.
- TDR cable testing accurately measures BNC, Ethernet, and serial cable break-point and short-circuit locations.
- USB-rechargeable Lithium-ion polymer battery.

## Specifications

- Connectors
  - Three female BNC connectors for video input and output, and TDR cable break point and short circuit testing.
  - Three female RJ45 ports for cable and PoE testing.
  - One female 3.5mm stereo audio jack to test audio pickup.
  - One 4-pin terminal block for RS232 interface.
  - One 2-pin terminal block for RS485/RS422 interface.
  - One female Mini USB Type A port for data transfer and battery charging.
  - One micro SD slot for additional storage space.
    - ◆ Includes 4GB micro SD card.
- Video
  - Signal mode: NTSC/PAL (auto adapts).
  - Display: 3.5" TFT-LCD, 480x320 resolution
    - ◆ 10x image zoom available.
  - LCD adjustments: brightness, contrast, and saturation.
  - Video output mode: 1.0 Vp-p.
  - Video level test: measured in IRE or mV.
- PTZ Controller
  - Communication: RS232, RS422 simplex and RS485.
  - PTZ protocol: compatible with more than 30 protocols.
    - ◆ PELCO-D/P, Samsung, etc.
  - 600, 1200, 2400, 4800, 9600, 19200, 57600, 115200 bps.
- Video Signal Generation
  - Eight different PAL/NTSC color bar video signals.
- Power over Ethernet (PoE) Test
  - Displays power+ and power- on each Ethernet cable pin.
  - Port flicker feature sends signals to the connected PoE port, enabling quick identification.
- IP connection
  - Use IP address scan to discover the connected camera's IP address.
  - Use Link monitor to check if the assigned IP address is occupied.
  - Use Ping test to ensure the assigned IP address is correct and properly connected.
  - IP camera video cannot be displayed on tester's LCD.
- TDR Test
  - Accurately measures BNC, Ethernet, and serial cable break-point and short circuit locations.
- PTZ Data Capture
  - Reads and displays RS485 commands sent from controllers.
- Dimensions
  - WxDxH (in): 4.41x1.89x7.56 (112x48x192 mm).
- Weight
  - 1.19 lb (540 g).
- Environmental
  - Operating temperature: 14 to 122°F (-10 to 50°C).
  - Operating humidity: 30 to 90% non-condensing RH.

# Professional CCTV Tester with Power Over Ethernet (PoE) and IP Testing

Display and configure video; control PTZ; test cables, audio, IP network connections, PoE voltage; and power 12VDC cameras.

## Specifications (continued)

- Power
  - Powered by a 3.7V Lithium-ion polymer battery, 3000 mAh.
  - ♦ Runtime: up to 11 hours
  - ♦ Recharge using included USB Type A male to Mini USB Type B male cable.
    - Connect the USB cable to the included 5V, 1.5A power adapter or a PC.
  - Power output for camera: 12VDC, 1A.
- Regulatory Approvals
  - CE, FCC.
- Warranty
  - Two Years

## Package Includes



- CCTV Tester
- Power supply (5V, 1.5A)
- CAT5 cable tester
- Lithium-ion polymer battery
- BNC male to male cable
- RS485 cable with alligator clips
- Power cable for camera
- 3.5 mm audio cable with alligator clips
- Carrying case
- Neck strap for carrying case
- Neck strap for CCTV tester
- Instruction manual

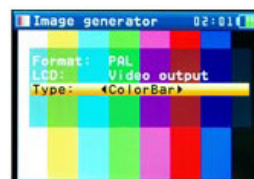
## TESTER-CCTV-P Screenshots



PTZ control



PTZ control set-up



Color bar generator



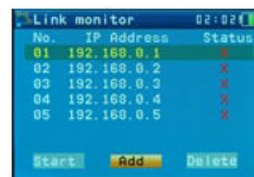
Adjust video settings



Ping testing



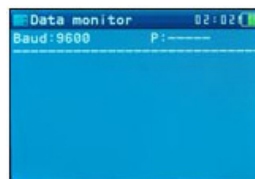
Cable testing



IP address scan



PoE testing



Capture & display RS485 data



Set unit parameters